



Beaufort County Public Works
Stormwater Infrastructure
Project Summary

Project Summary: Community Center Road
 Project #: 2009-140 Completed: Jul-09
 Narrative Description of Project:
 Project improved 5,140 L.F. of drainage system. Cleaned out 5,140 L.F. of roadside ditch. Upsized (1) driveway pipe to correct elevation. Jetted (4) crossline pipes and (31) driveway pipes.

Material Cost, Rental Equipment Summary, and Labor

Material	Unit	Cost/Unit	Qty	Cost
18" RCP Pipe	linear feet	\$10.59	16.0	\$169.44
Fill Dirt	ton	\$1.00	5.3	\$5.30
FLBC	ton	\$26.22	3.4	\$88.10
Silt Fence	sy	\$0.78	3.9	\$3.03
Asphalt	ton	\$79.18	3.3	\$262.09
Tack	ton	\$2.68	5.0	\$13.40
Pin Flag	each	\$0.06	128.0	\$7.68
Water	gallon	\$0.01	9,900	\$99.00
Diesel	gallon	\$2.15	349.0	\$750.35
Gas	gallon	\$2.19	25.0	\$54.75
Labor	hours		667.0	\$22,503.04
Total Cost of Materials, Rental Equip., and Labor				\$23,956.18

Note: Labor cost includes the employee's salary plus fringe benefits.

Equipment Cost

Item	Asset	Cost/Hou	Hrs.	Cost
JBC Backhoe	22810	\$36.50	68.0	\$2,482.00
JD Loader 444J	23271	\$29.75	1.0	\$29.75
Asphalt Roller	20237	\$14.78	1.0	\$14.78
Vacuum Truck	22812	\$20.30	24.0	\$487.20
Dump Trucks		\$16.68	149.5	\$2,493.66
Pickup Trucks		\$4.17	149.0	\$621.33
Total Equipment Cost				\$6,128.72

Cost/hour excludes fuel cost.
\$30,084.90

Site Photographs

Before



During



After



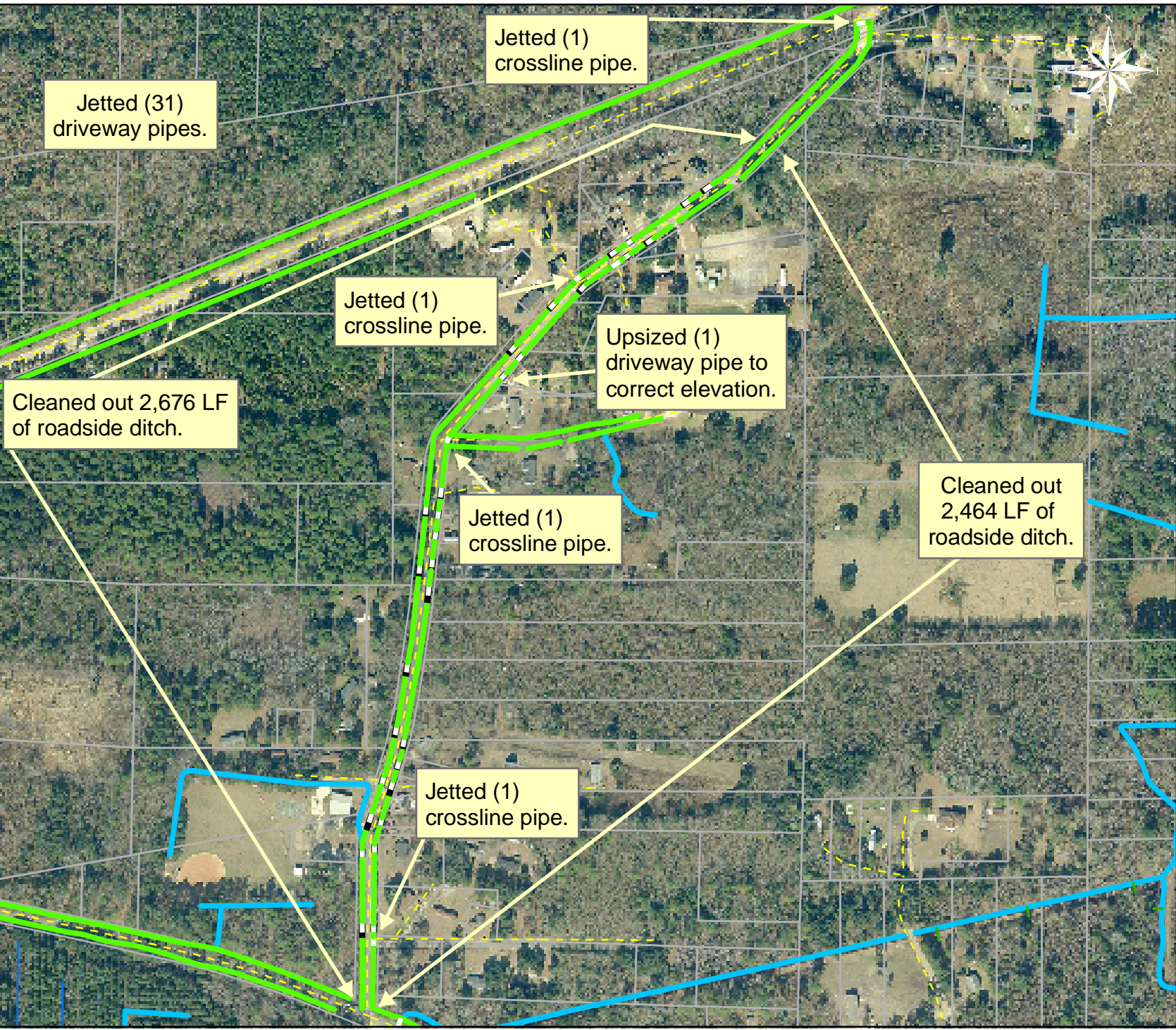
Project:
Community Center Road

Activity: Drainage Maintenance

Project #:
2009-140

Township: Sheldon

Completed:
July 2009



Legend

Drainage Type

- River
- Stream
- Outfall
- Lateral
- Roadside
- - - Roadside Pipe
- - - Crossline
- D/W
- Access
- Piped
- Bleeder
- Parcels



1 inch equals 398.39 feet